

LEILA HELLER GALLERY.



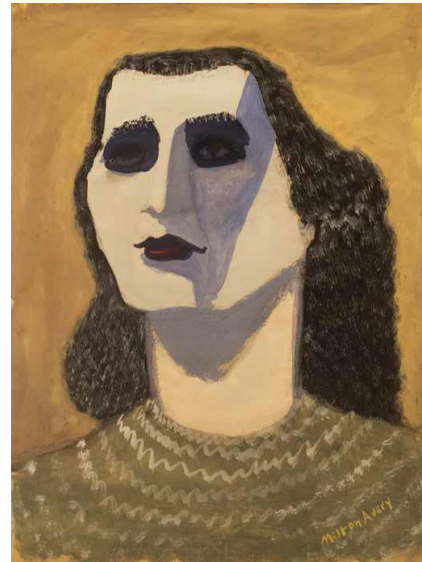
MARINA ABRAMOVIC
Portrait with Falcon, 2010
Silver gelatin print
12 x 12 in. (30.5 x 30.5 cm)



REZA ARAMESH
Action 135: May 8, 1945. 9:03am. City of Setif, Algeria, 2014
Hand-carved Lime wood, glass eyes and paint
35.8 x 11 x 5.5 in. (35.8 x 90.9 cm)



GHADA AMER
Belles and White Kiss, 2006
Acrylic, embroidery and gel medium on canvas
64 x 72 in. (162.6 x 182.9 cm)



MILTON AVERY
Strong Woman, 1939
Gouache on paper
26 x 18 in. (61 x 65.7 cm)

LEILA HELLER GALLERY.



JONATHAN BECKER

Andy Warhol in Elaine's Kitchen, Winter, 1976
Archival b/w pigment on fiber
60 x 60.5 in. (152.4 x 153.7 cm)



VALERIE BELIN

Tête Couronnée #2, 2009
Silkscreen in color on Hahnemühle Museum Paper
74 x 57.5 in. (188 x 146.1 cm)



KELLY BEHUN

Gaze: After Charlotte, 2012
Faceted wall mirror with digitally printed image on laminated mirror
60 x 73.5 in. (152.4 x 186.7 cm)



CLAUDIO BRAVO

Seated Nude, 1974
Pastel on paper
26 x 31.5 in. (66 x 80 cm)

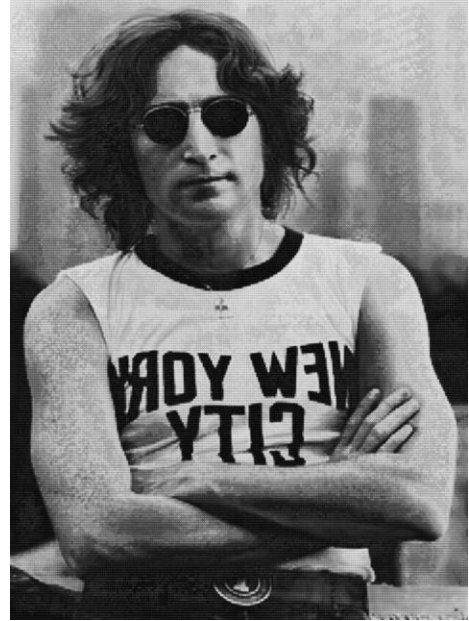
LEILA HELLER GALLERY.



THE BRUCE HIGH QUALITY FOUNDATION

Self-Portrait (Vito), 2010

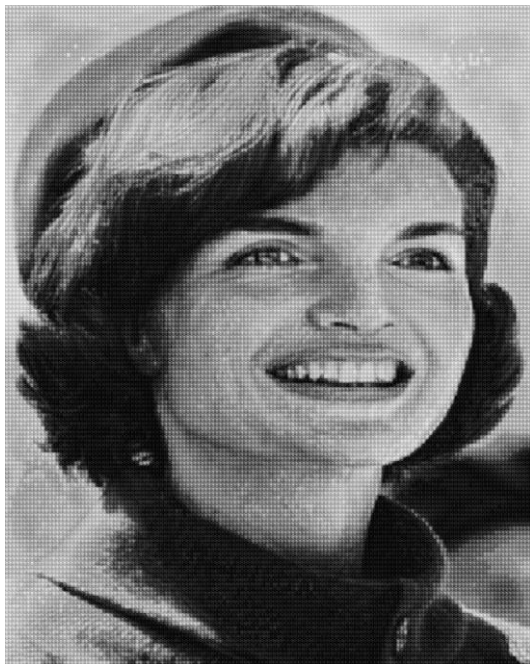
Silkscreen, acrylic and enamel paint on canvas
80 x 80 in. (203.2 x 203.2 cm)



ALEX GUOFENG CAO

LENNON VS ELVIS, AFTER BOB GRUEN, 2009

Chromogenic print with Dibond and Plexiglas
From an edition of 18
60 x 40 in. (152.4 x 101.6 cm)



ALEX GUOFENG CAO

JACKIE VS JFK II, 2010

Chromogenic print with Dibond and Plexiglas
An AP from a sold out edition of 10
60 x 40 in. (152.4 x 101.6 cm)



ALEX GUOFENG CAO

MARILYN VS MONA LISA, 2009

Chromogenic print with Dibond and Plexiglas
An AP from a sold out edition of 18
60 x 40 in. (152.4 x 101.6 cm)

LEILA HELLER GALLERY.



GORDON CHEUNG

Top 10 Hackers, 2009

Stock listings, ink, acrylic gel and spray-paint on canvas
16 x 24 in. each (40.6 x 61cm)



WILL COTTON

Cotton Candy Venus, 2010

Oil on linen

72 x 96 in. (182.9 x 243.8 cm)



SANDRO CHIA

Happy Birthday, 2011

Oil on canvas

65 x 53.1 in. (165 x 135 cm)



ELAINE DE KOONING

Bill, 1952

Oil on canvas

48 x 32 in. (121.9 x 81.3 cm)

LEILA HELLER GALLERY.



LALLA ESSAYDI

Harem Revisited #47, 2013

3 chromogenic prints mounted to aluminum with a UV protective laminate
40 x 30 in. (101.6 x 76.2 cm)



RED GROOMS

Portrait of Diana, 1984

Watercolor on paper
24 x 43 in. (61 x 109.2 cm)



GILBERT & GEORGE

Lover, 2011

Mixed media
111.8 x 100 in. (284 x 254 cm)



GHASEM HAJZADEH

Murad, 1999

Mixed media on paper laid on canvas
39.5 x 49 in. (100.3 x 124.5 cm)

LEILA HELLER GALLERY.



NIR HOD
Genius Todd, 2012
Oil on canvas
58 x 43 in. (147.3 x 109.2 cm)



RICHARD HUDSON
Marilyn Monroe, 2013
Plywood
102.4 in. (260.1 cm)



RACHEL LEE HOVNIANIAN
Breakfast of Champions, 2014
Mixed media
41.5 x 41.5 in. (105.4 x 105.4 cm)



CHANTAL JOFFE
Megan, 2012
Oil on linen
39.4 x 19.8 x 1.5 in. (100.1 x 50.3 x 3.8 cm)

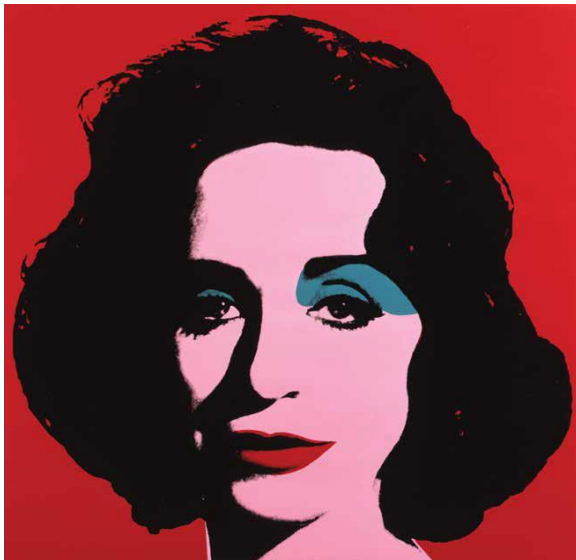
LEILA HELLER GALLERY.



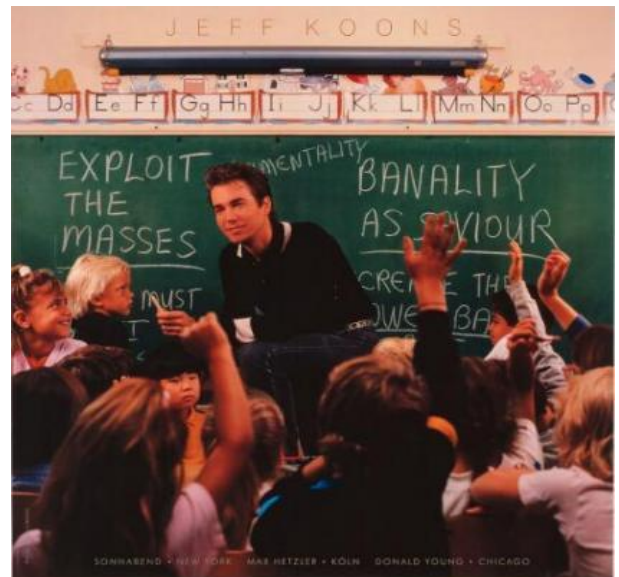
Y.Z. KAMI
Untitled, 1995
Oil on canvas
30 x 20 in. (76.2 x 50.8 cm)



JEMIMA KIRKE
Elizabeth, 2009
Oil on canvas
30 x 36 in. (76.2 x 91.4 cm)



DEBORAH KASS
Red Deb, 2000
Silkscreen and acrylic on canvas
40 x 40 x 1.5 in. (101.6 x 101.6 x 3.8 cm)



JEFF KOONS
Art Magazine Ads, 1988-89
Lithograph portfolio of 4
45 x 37.3 in. (114.3 x 94.7 cm)

LEILA HELLER GALLERY.



MARIA KREYN
Armor I, 2014

Led-backlit etching on resin-coated Plexiglas
36 x 24 in. (91.4 x 61 cm)



MARIA KREYN
Power Play I, 2014

Led-backlit etching on resin-coated Plexiglas
36 x 24 in. (91.4 x 61 cm)



MARIA KREYN
Armor II, 2014

Led-backlit etching on resin-coated Plexiglas
36 x 24 in. (91.4 x 61 cm)



MARIA KREYN
Power Play II, 2014

Led-backlit etching on resin-coated Plexiglas
36 x 24 in. (91.4 x 61 cm)

LEILA HELLER GALLERY.



ANNIE LEIBOVITZ

*Alice in Wonderland, Donatella Versace and Rupert
Everett with Natalia, Paris, 2003*
20 x 24 in. (50.8 x 61 cm)



LORETTA LUX

Study of a Girl 2, 2002
Lifochrome print
11.8 x 11.8 in. (30 x 30 cm)
Edition 19 of 20



LORETTA LUX

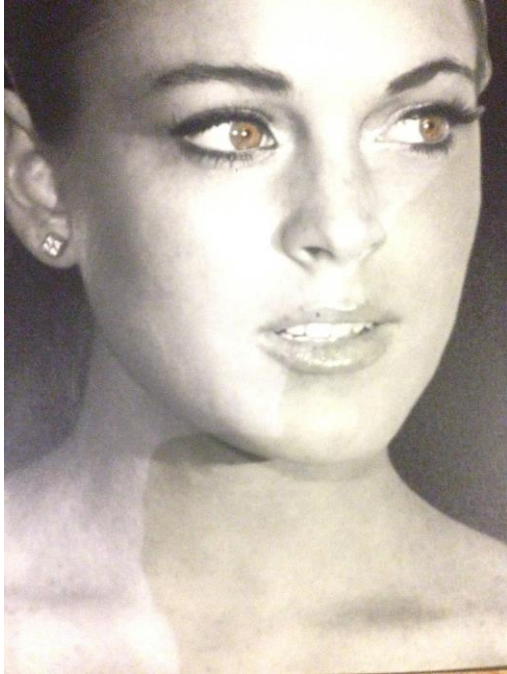
The Irish Girls, 2005
Lifachrome print
17.7 x 17.7 in (45 x 45 cm)
Edition 5 of 20



MCDERMOTT & MCGOUGH

A Half Forgotten Dream, 1967, 2012
Oil on canvas
60 x 48 in (152.4 x 121.9 cm)

LEILA HELLER GALLERY.



PATRICK MCMULLAN

Lindsay Lohan from the "Starlet Series," 2010

Photograph on canvas

14 x 14 in. (35.6 x 35.6 cm)

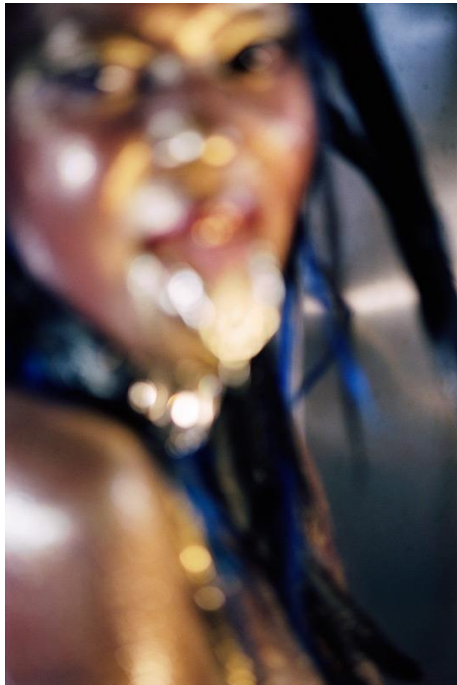


VIK MUNIZ

Princess Diana, 2008

Digital chromogenic print

92.6 x 67 in. (235.2 x 170.2 cm)



MARILYN MINTER

Wangechi Gold 2, 2009

C-print

40 x 30 in. (101.6 x 76.2 cm)



JULIAN OPIE

Finn, eyes left, head left, 2013

Inkjet on paper on aluminum

39.25 x 27.75 in. (99.7 x 70 cm)

LEILA HELLER GALLERY.



YOUSSEF NABIL
In Love, Denver, 2012
Hand-colored gelatin silver print
29.5 x 45.3 in. (74.9 x 115.1 cm)



RICHARD PHILLIPS
Most Wanted, 2011
Ten giclee prints on Somerset enhanced 330gsm paper
18.1 x 14.6 in. (46 x 37 cm)
Edition of 10



SHIRIN NESHAT
Pari, 2008
C-print and ink
14.5 x 10.5 in. (36.8 x 26.7 cm)



MOJDEH PISHYAR
Chameleon Diva, 2014
Oil on canvas

LEILA HELLER GALLERY.



MICHELANGELO PISTOLETTO

Senza Titolo 58, 1976

Antique painting, mica

29.5 x 25.9 in. (75 x 66 x 2 cm)



RICHARD PRINCE

Untitled (Girlfriend), 2013

Pigment print on stretched canvas

60 x 50 in. (152.4 x 127 cm)



RONA PONDICK

Fukien Tea, 2003

Bronze, paint and rocks

28 x 15 x 14 in. (71.1 x 38.1 x 35.7 cm)



MURAT PULAT

Schizoid/Surface, 2013

Mixed media

Dimensions variable

LEILA HELLER GALLERY.



DONALD ROLLER WILSON
Little Betty, 1980
Oil on canvas
12 x 16 in. (30.5 x 40.6 cm)



JULIAN SCHNABEL
Portrait of Geoffrey Bradfield, 2009
Plates, Bondo on Wood
60 x 48 in. (152.4 x 121.9 cm)



MARTIN SARR
Bob, 2014
Acrylic and oil on canvas, 2014
40 x 30 in. (101.6 x 76.2 cm)



CINDY SHERMAN
Untitled, 1989
Chromogenic color print
38 x 27.5 in. (96.5 x 69.9 cm)

LEILA HELLER GALLERY.



GORDON STEVENSON & YUNG JAKE

Gordon and Jake, 2010

Neon light on wood

22 x 40 in. (55.9 x 101.6 cm)



IKE UDE

Jean Shafiroff, 2010

Pigment on satin paper



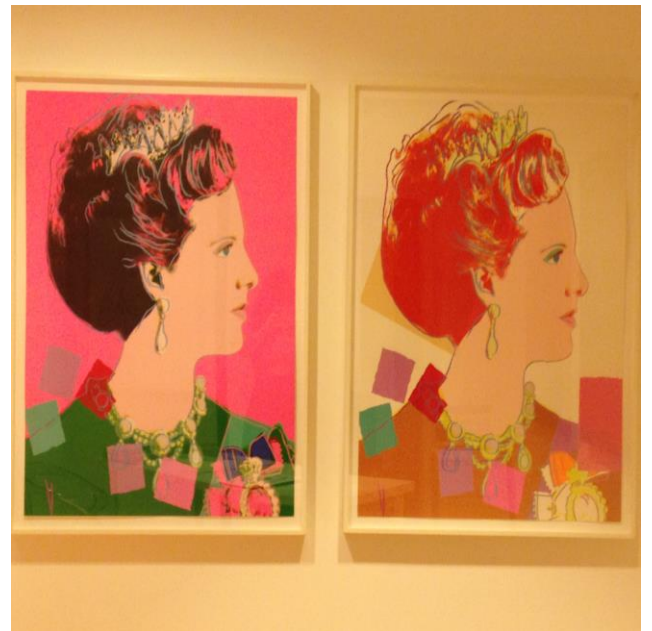
Ike Ude

Sartorial Anarchy #6, 2013

Pigment on satin paper

54 x 36.1 in. (137.2 x 91.7 cm)

Edition of 3, 3 AP



ANDY WARHOL

Queen Margrethe II of Denmark,
from "Reigning Queens" series, 1985

Screenprint in colors

39.25 x 31.4 in. (99.7 x 79.8 cm)

LEILA HELLER GALLERY.



NICK WEBER

Untitled (Portrait of Tripoli), 2013

Oil on canvas

18 x 24 in. (45.7 x 61 cm)

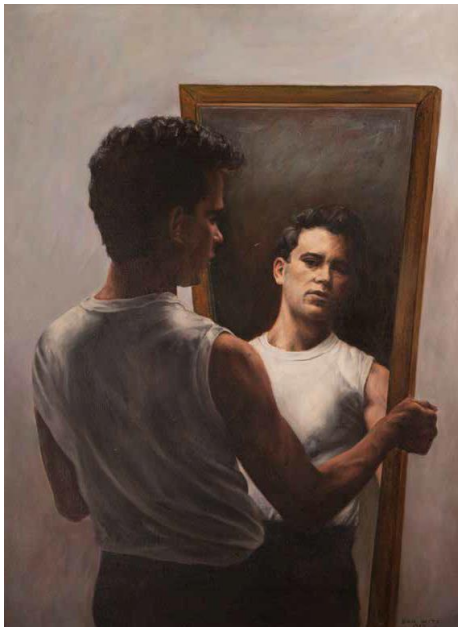


DARIUS YEKTAI

Untitled (Leah), 2012

Oil and wood on linen

100 x 72 in. (254 x 182.9 cm)



DAN WITZ

Untitled, 1984

Oil on canvas

28.5 x 20.5 in. (72.4 x 52.1 cm)



FIROOZ ZAHEDI

Angelina Jolie, 2001 (Printed 2011)

Chromogenic print on Kodak Endura Matte Paper

42 x 33 in. (106.7 x 83.8 cm)

LEILA HELLER GALLERY.



FIROOZ ZAHEDI

Sigourney/Julianna (The Full Body Shots), 2014

Mixed media

12 x 10 in. (30.5 x 25.4 cm)



FIROOZ ZAHEDI

Sharon/Charlize (The Close Up), 2014

Mixed media

12 x 10 in. (30.5 x 25.4 cm)